



— YODDHA WALLGUARD PUTTY —

"DEEWARON KO DE KHOOBSURTI
KE SAATH MAJBOOTI BHI"



Yoddha Wallguard Putty is a white cement-based, water-resistant whitest wall putty for the brightest walls, that ensures smooth surface, extensive coverage, superior refractive index, paint-friendliness, and strong binding with building surfaces. Its unique formula has Extra HP German polymers which keep the moisture away and prevent flaking. With this putty, you're sure to get aesthetic interiors for your dream home for years to come.

WHY YODDHA WALLGUARD PUTTY ?



Prevents flaking
of Paint



Strong Bond With
base plaster



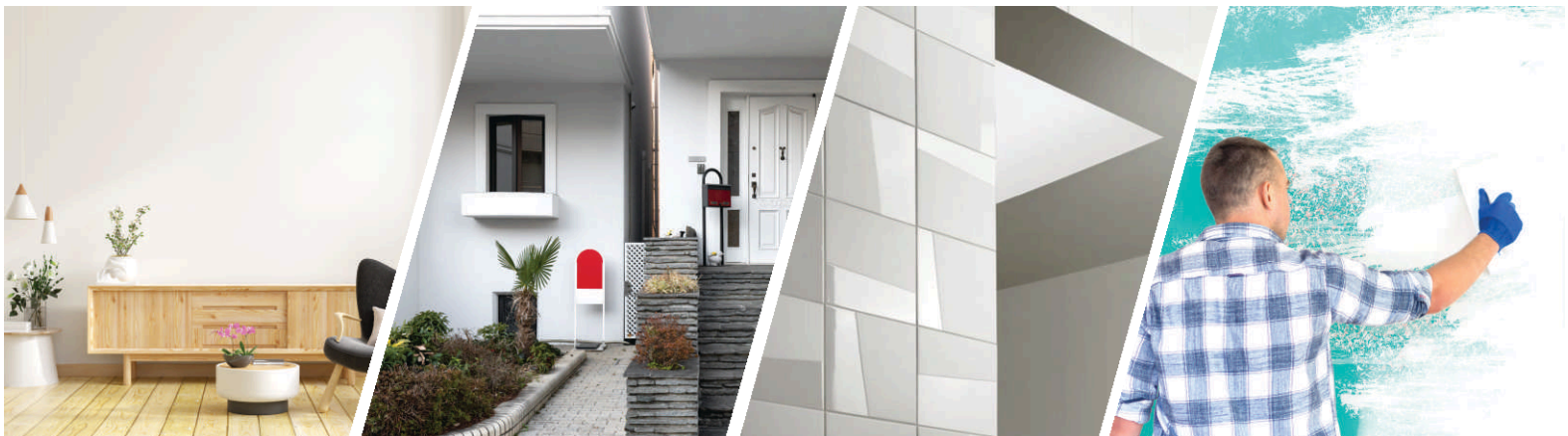
Ideal For Internal
& External Walls



Water Resistant

- ▶ Gives surfaces a smooth and glossy finish.
- ▶ Offers superior whiteness and enhanced durability.
- ▶ Enhanced adhesion and durability.
- ▶ Water-resistant due to extra HP German polymers.
- ▶ Brings out the true tone of colour.
- ▶ No curing required after application.
- ▶ Resists dampness on painted surface.
- ▶ Anti-carbonation property.
- ▶ Reduces the consumption of paints and binds strongly with the base.

Scope of Application



INTERIOR WALLS

EXTERIOR WALLS

WALL SEGMENTS

REPAINTING WALLS

HOW TO APPLY YODDHA WALLGUARD PUTTY



Step 1 - Prepare the Surface

Clean the surface thoroughly. It is essential to free the surface prior to wall putty application from oil, solvents, dirt and dust with a scraper.



Step 2 - To mix the Putty

Employ a mechanical stirrer to achieve a uniform, lump free paste. Allow the mixture to settle for 5 minutes before application.



Step 3 - Pre-wetting the Wall

Before wall putty application, prewet the wall surface to remove loose dust particles.



Step 4 - Application

Use a spatula, blade, or trowel to apply the first coat of homogeneous paste from bottom to top and the second coat horizontally.



Step 5 - Second Coat

Once the first coat dries, clean the surface to remove loose particles with a sponge/cloth/putty blade before the second coat application.



Step 6 - Drying

Before the application of distemper or paint for a premium look, wait for the surface to dry completely.

PRECAUTIONS DURING APPLICATION

Do's:

- ▶ Mix Yoddha WallGuard Putty with a mechanical stirrer for amazing results.
- ▶ Water should be added to putty incrementally during mixing and not vice-a-versa.
- ▶ After final coat application, the putty surface (max 1.5 thick coats) cannot be left alone for more than 60 days, especially where interior application is carried out.
- ▶ After final coat application, the putty surface (max 1.5 thick coats) cannot be left alone for more than 30 days, especially where exterior application is carried out.

Don'ts:

- ▶ Don't add the putty to water.
- ▶ Don't apply Yoddha WallGuard Putty on a dry surface.
- ▶ Once the putty is applied, don't rub the surface strongly or with a rough emery paper. This will break the film formed over it which decreases the water repellence properties.

Coverage

The coverage area of Yoddha WallGuard Putty on smooth normal mortar wall is 1.5 to 2.0 Sq. Meter/KG in two coats. The coverage area, however, will depend upon the nature of the substrate.

Storage

Yoddha WallGuard Putty should be stored in a dry place. For best results, use it within 6 months from the date of manufacture.

Precautions during usage

- ▶ Though it contains non-toxic materials, proper care still needs to be taken care of to avoid dust inhalation while mixing and handling.
- ▶ In case of contact with eyes or mouth, wash with plenty of clean water.
- ▶ Keep it in a dry place and out of reach of children.
- ▶ Persons who are allergic to cement/cement products should take proper precautions before using it.

TECHNICAL SPECIFICATION

SN	Test Parameter	Units of measurement	Results	Norms as per specification	Test Method
1	Initial Setting Time	Minutes	≥ 190	Min. 180 Minutes	IS 17545:2021 Annex D
2	Final Setting Time	Minutes	≤ 400	Max. 500 Minutes	IS 17545:2021 Annex D
3	Compressive Strength @28 Days	N/mm ²	7.1	5 - 8	IS 4031 Part-6:2019
4	Water Retentivity	%	99	> 95	IS 17545:2021 Annex C
5	Pot Life after 60 Minutes	Qualitative	Pass	-	RKCT SOP
6	Tensile Adhesion Strength @ 28 days	N/mm ²	1.1	≥ 1	EN 1348

PACKAGING AVAILABLE IN 40 KG & 20 KG TAMPER-PROOF BAGS

Flashback

Having an expertise of 25 years in the construction building material business running under the roof of Piyush Traders, we are pleased to introduce Yoddha WallGuard Putty. With an underpinning of our Market image, we have a very strong network and we have linked ourselves with various big projects. We have established ourselves as the leading & largest supplier of building material since 1995. We take pride in introducing ourselves as one of the best Putty Plant in Jabalpur and believe in post-sale service with excellent technical support to valuable customers. Our plant is located at Nigri, Jabalpur Madhya Pradesh.

OTHER PRODUCTS BY YODDHA GROUP



Tile Adhesive



PAVER BLOCK



FLY ASH BRICK



CEMENT



READY MIX CONCRETE

Weight Slip Available



BLOCK JOINTING MORTAR



AAC BLOCK

World's Best Plant & Machinery

JABALPUR CEMENT INDUSTRIES PRIVATE LIMITED

Works: Patwari Halka No. 36, Nigri, Panchayat Headquarter, Bargi, Jogidhana, Jabalpur 482051 (M.P.)

CORPORATE OFFICE : Katangi Road, Karmeta, Jabalpur 482002 (M.P.)

CUSTOMER CARE: info@yoddhagroup.com

WEBSITE: www.yoddhagroup.com

TOLL FREE NUMBER : 1800 890 5657